

# PTOUTWEAR

PT OUTDOOR PRODUCTS FACTORY · EST. 2013

## Outdoor Jacket Collection 2026

Hardshell · Softshell · 3-in-1 · Down · Fleece · Vests · Pants — OEM / ODM manufacturing with low MOQ and full custom branding.

**12+**  
YEARS

**200K**  
PCS / YEAR

**30**  
MOQ

**4 wks**  
LEAD TIME

# The Factory

Pt Outdoor Products Factory (帕特户外用品厂) is a vertically integrated outdoor-apparel manufacturer founded in 2013. Production sits in Sanmen, Taizhou — on the Zhejiang coast beside China's outdoor-garment cluster — with an international trade office in Yiwu, the world's largest export hub. We specialise in flexible, low-MOQ custom production for dropship sellers, schools and corporate teamwear, shipping worldwide including DDP.

## Factory at a glance

Established	2013 (12+ yrs)
Workforce	240 staff
Facility	3,000 m <sup>2</sup> · 20 lines
Annual capacity	200,000 pcs
Production	Sanmen, Taizhou
Trade office	Yiwu, Zhejiang

## Equipment

Seam-sealing / taping	5
Waterproof-zip machines	3
Computer embroidery	5
Print / heat-transfer	10
Laser engraving	2
Auto cutting (CAD-CAM)	2

## Service & terms

MOQ	30 pcs (1-pc sampling)
Sample fee	\$100, refundable on order
Lead time	4 weeks (rush 1,000 pcs / 2 wks)
Custom branding	Embroidery / Screen / Heat-transfer / Laser
Shipping	DDP · dropship-ready

## Quality & compliance

ISO 9001

SGS Tested

PFC-Free DWR

YKK zippers · fully taped / heat-sealed seams on hardshell lines · ISO 811 / ISO 9237 waterproof & breathability testing available on request. Custom hangtags, woven labels and branded packaging supported.

## 3-in-1 Two-Piece Hardshell



## FABRIC

100% polyester · T400 micro-Oxford shell

## LINER

≈360gsm bonded ultra-soft fleece (detachable)

## SIZE

XS-4XL · custom grading

Waterproof 10,000mm

Breathable 6,000g

Detachable hood

Fully taped seams

Zip pockets

## Available Colors — 5 shown of 5 colorways



Black



Grey



Navy



Red



Ether Blue

## Detail Showcase



## Size Chart (cm)

Size	Chest	Length	Shoulder	Sleeve
XS	110	67	45	60
S	114	69	46.5	61
M	118	71	48	62
L	122	73	49.5	63
XL	126	75	51	64
2XL	130	77	52.5	65
3XL	134	79	54	66
4XL	138	81	55.5	67

Representative measurements; tolerance ±1-3cm. Custom grading &amp; tech-pack matching on OEM orders.

OEM / ODM • Custom  
Branding

Logo: Embroidery / Screen / Heat-transfer / Laser

MOQ 30 pcs

1-pc sampling

Lead time 4 wks DDP shipping

**Fleece-Lined Hardshell**

FABRIC 100% polyester - T800 shell

LINER ≈410gsm bonded fleece liner

SIZE XS-4XL - custom grading

Waterproof **10,000mm**Breathable **5,000g**

YKK zipper

Detachable hood

Oil &amp; stain resist


**Available Colors** — 2 shown of 8 colorways


White / Maroon



Mustard Yellow

**Detail Showcase**

**Size Chart** (cm)

Size	Chest	Length	Shoulder	Sleeve
XS	112	68	74	/
S	116	70	76	/
M	120	72	78	/
L	124	74	80	/
XL	128	76	82	/
2XL	132	78	84	/
3XL	136	80	86	/
4XL	140	82	88	/

Representative measurements; tolerance ±1-3cm. Custom grading &amp; tech-pack matching on OEM orders.

**OEM / ODM • Custom  
Branding**
Logo: **Embroidery / Screen / Heat-transfer / Laser**MOQ **30 pcs****1-pc** samplingLead time **4 wks** **DDP** shipping

## Fleece-Lined Hardshell

FABRIC 100% polyester - T400 micro-Oxford

LINER ≈400gsm bonded ultra-soft fleece

SIZE XS-4XL - custom grading

Waterproof 10,000mm

Breathable 9,000g

Detachable hood

YKK zipper

Fully taped seams



## Available Colors — 5 shown of 6 colorways



Lavender



Black



Red



Navy



Rose

## Detail Showcase



## Size Chart (cm)

Size	Chest	Length	Shoulder	Sleeve
XS	108	67	45.6	61
S	112	69	46.8	62.5
M	116	71	48	64
L	120	73	49.2	65.5
XL	124	75	50.4	67
2XL	128	77	51.6	68.5
3XL	132	79	52.8	70
4XL	136	81	54	71.5

Representative measurements; tolerance ±1-3cm. Custom grading &amp; tech-pack matching on OEM orders.

OEM / ODM • Custom  
Branding

Logo: Embroidery / Screen / Heat-transfer / Laser

MOQ 30 pcs

1-pc sampling

Lead time 4 wks DDP shipping

## Fleece-Lined Hardshell



**FABRIC** 86% nylon / 14% spandex

**LINER** ≈400gsm bonded fleece + thermal-reflective lining

**SIZE** XS-4XL · custom grading

Waterproof **10,000mm**

Breathable **5,000g**

Hooded

Padded hood

Thermal-reflective liner

Available Colors — 3 shown of 3 colorways



Ginger Yellow



Navy Blue



Black

Detail Showcase



Size Chart (cm)

Size	Chest	Length	Shoulder	Sleeve
XS	112	74	45	58.5
S	116	76	46	60
M	120	78	47	61.5
L	124	80	48	63
XL	128	82	49	64.5
2XL	132	84	50	66
3XL	136	86	51	67
4XL	140	88	52	68

Representative measurements; tolerance ±1-3cm. Custom grading & tech-pack matching on OEM orders.

OEM / ODM • Custom  
Branding

Logo: Embroidery / Screen / Heat-transfer / Laser

MOQ 30 pcs

1-pc sampling

Lead time 4 wks DDP shipping

## Fleece-Lined Hardshell

FABRIC

150D pongee · mechanical-stretch TPU laminate

LINER

≈400gsm bonded ultra-soft fleece

SIZE

XS-5XL · custom grading

Waterproof **10,000mm**

Breathable **3,000g**

Fully taped seams

Detachable hood

Windproof



### Available Colors — 5 shown of 10 colorways



China Red



Abyss Green



Khaki



Space Grey



Sakura Pink

### Detail Showcase



### Size Chart (cm)

Size	Chest	Length	Shoulder	Sleeve
XS	112	68	44.5	61.5
S	116	70	45.5	63
M	120	72	46.5	64.5
L	124	74	47.5	66
XL	128	76	48.5	67.5
2XL	132	78	49.5	69
3XL	136	80	50.5	70.5
4XL	140	82	51.5	72
5XL	144	84	52.5	73.5

Representative measurements; tolerance ±1-3cm. Custom grading & tech-pack matching on OEM orders.

OEM / ODM • Custom Branding

Logo: Embroidery / Screen / Heat-transfer / Laser

MOQ 30 pcs

1-pc sampling



## Fleece-Lined Hardshell

FABRIC

T400 micro-Oxford · sherpa-fleece bonded

LINER

≈420gsm bonded sherpa fleece

SIZE

Unisex S-4XL · custom grading

Waterproof **10,000mm**Breathable **6,000g**

Fully taped seams

Windproof

Thermal

### Available Colors — 5 shown of 7 colorways



Black



Khaki



Navy



Storm Grey



Steel Blue

### Detail Showcase



### Size Chart (cm)

Size	Chest	Length	Shoulder	Sleeve
S	114	76	46.5	61
M	118	78	47.75	62.5
L	122	80	49	64
XL	126	82	50.25	65.5
2XL	130	84	51.5	67
3XL	134	86	52.75	68.5
4XL	138	88	54	70

Representative measurements; tolerance ±1-3cm. Custom grading & tech-pack matching on OEM orders.

OEM / ODM · Custom  
Branding

Logo: Embroidery / Screen / Heat-transfer / Laser

MOQ 30 pcs

1-pc sampling

Lead time 4 wks

DDP shipping

**Fleece-Lined Hardshell****FABRIC**

100% polyester - silver-fox fleece bonded

**LINER**

silver-fox brushed fleece liner

**SIZE**

XS-5XL - custom grading

Detachable hood

Underarm vents

Water-repellent (DWR)

**Available Colors** — 5 shown of 9 colorways

Royal Blue



Black



Navy White



Green



Red

**Detail Showcase****Size Chart** (cm)

Size	Chest	Length	Shoulder	Sleeve
<b>XS</b>	112	68	44.5	61.5
<b>S</b>	116	70	45.5	63
<b>M</b>	120	72	46.5	64.5
<b>L</b>	124	74	47.5	66
<b>XL</b>	128	76	48.5	67.5
<b>2XL</b>	132	78	49.5	69
<b>3XL</b>	136	80	50.5	70.5
<b>4XL</b>	140	82	51.5	72
<b>5XL</b>	144	84	52.5	73.5

Representative measurements; tolerance  $\pm 1-3$ cm. Custom grading & tech-pack matching on OEM orders.**OEM / ODM** • Custom  
BrandingLogo: **Embroidery / Screen / Heat-transfer / Laser**MOQ **30 pcs****1-pc** sampling

## Couple Fleece-Lined Hardshell



**FABRIC** 150D high-stretch pongee · polyester

**LINER** ≈400gsm bonded fleece liner

**SIZE** Men's S-5XL / Women's S-4XL · custom grading

Waterproof **8,000mm**

Breathable **3,000g**

Detachable hood

YKK zipper

Windproof

### Available Colors — 4 shown of 12 colorways



Black



Red



Charcoal Grey



Navy

### Detail Showcase



### Size Chart (cm)

Size	Chest	Length	Shoulder	Sleeve
S	116	71	46	60
M	120	73	47.5	61.5
L	124	75	49	63
XL	128	77	50.5	64.5
2XL	133	78.5	52	66
3XL	138	80	53.5	67.5
4XL	140	82	55	69
5XL	144	84	57	71

Representative measurements; tolerance ±1-3cm. Custom grading & tech-pack matching on OEM orders.

**OEM / ODM** · Custom  
Branding

Logo: Embroidery / Screen / Heat-transfer / Laser

MOQ 30 pcs

1-pc sampling

Lead time 4 wks DDP shipping

**Couple Fleece-Lined Hardshell****FABRIC**

150D pongee · mechanical-stretch TPU laminate

**LINER**

≈400gsm silver-fox bonded fleece

**SIZE**

Unisex XS-4XL · custom grading

Waterproof **8,000mm**Breathable **3,000g**

YKK front zip

Detachable hood

Hydrostatic head 8,000

**Available Colors** — 4 shown of 6 colorways

Light Blue / Navy



Red / Black



Black



Royal Blue

**Detail Showcase****Size Chart** (cm)

Size	Chest	Length	Shoulder	Sleeve
<b>XS</b>	110	68	47	58
<b>S</b>	114	70	48.2	59.6
<b>M</b>	118	72	49.4	61.2
<b>L</b>	122	74	50.6	62.8
<b>XL</b>	126	76	51.8	64.4
<b>2XL</b>	130	78	53	66
<b>3XL</b>	134	80	54.2	67.6
<b>4XL</b>	138	82	55.4	69.2

Representative measurements; tolerance ±1-3cm. Custom grading &amp; tech-pack matching on OEM orders.

**OEM / ODM** · Custom  
BrandingLogo: **Embroidery / Screen / Heat-transfer / Laser**MOQ **30 pcs****1-pc** samplingLead time **4 wks** **DDP** shipping

## Couple Outdoor Down Jacket

黑色  
Black



FABRIC 100% polyester · 300T ripstop

LINER 90% white duck down (national-std)

SIZE Unisex S-2XL · custom grading

90% white duck down

Hood w/ brim

Taped outer seams

Ergonomic sleeves

### Available Colors — 3 shown of 3 colorways



Black



Solitude



Stratus

### Detail Showcase



### Size Chart (cm)

Size	Chest	Length	Shoulder	Sleeve
S	118	72	45.5	67
M	124	74	47.5	68
L	130	76	49.5	69
XL	136	78	51.5	70
2XL	142	80	53.5	71

Representative measurements; tolerance ± 1–3cm. Custom grading & tech-pack matching on OEM orders.

OEM / ODM · Custom  
Branding

Logo: Embroidery / Screen / Heat-transfer / Laser

MOQ 30 pcs

1-pc sampling

Lead time 4 wks DDP shipping

## Couple Wool Hoody Jacket

### FABRIC

80% polyester / 18% wool / 2% elastane blend

### SIZE

Unisex S-3XL · custom grading

Hood w/ brim

Fully taped seams

Windproof

Thermal



### Available Colors — 2 shown of 2 colorways

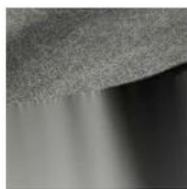


Heather Grey



Black

### Detail Showcase



### Size Chart (cm)

Size	Chest	Length	Shoulder	Sleeve
S	118	69.5	47.3	63.5
M	122	71.5	48.5	65
L	126	73.5	49.7	66.5
XL	130	75.5	50.9	68
2XL	134	77.5	52.1	69.5
3XL	138	79.5	53.3	71

Representative measurements; tolerance ±1-3cm. Custom grading & tech-pack matching on OEM orders.

**OEM / ODM** · Custom  
Branding

Logo: **Embroidery / Screen / Heat-transfer / Laser**

MOQ **30 pcs**

**1-pc** sampling

Lead time **4 wks** **DDP** shipping

**Couple Softshell Jacket****FABRIC**

4-way stretch · 92% polyester / 8% spandex

**LINER**

bonded fleece backing

**SIZE**

Unisex S-4XL · custom grading

Hooded

Windproof

Water-repellent

Zip pockets

**Available Colors** — 4 shown of 4 colorways

Black



Navy Blue



Sage Green



Khaki

**Detail Showcase****Size Chart** (cm)

Size	Chest	Length	Shoulder	Sleeve
S	112	65	46	60
M	116	67	47.5	61.5
L	120	69	49	63
XL	124	71	50.5	64.5
2XL	128	73	52	66
3XL	132	75	53.5	67.5
4XL	136	77	55	69

Representative measurements; tolerance ±1-3cm. Custom grading &amp; tech-pack matching on OEM orders.

**OEM / ODM** · Custom  
Branding

Logo: Embroidery / Screen / Heat-transfer / Laser

MOQ 30 pcs

1-pc sampling

Lead time 4 wks

DDP shipping

**Couple Softshell Jacket****FABRIC**100D 4-way stretch fleece-bonded ·  
≈310gsm**LINER**

bonded fleece backing

**SIZE**

Unisex S-XXL · custom grading

Hood w/ brim

4 zip pockets

Adjustable cuffs &amp; hem

**Available Colors** — 4 shown of 6 colorways

Silver Grey



Sage Green



Black



Mustard Yellow

**Detail Showcase****Size Chart** (cm)

Size	Chest	Length	Shoulder	Outer/Inner Sleeve
<b>S</b>	118	69	46	65/53
<b>M</b>	122	71	47	67/55
<b>L</b>	126	73	48	69/57
<b>XL</b>	130	75	49	71/59
<b>2XL</b>	134	77	50	73/61

Representative measurements; tolerance ±1-3cm. Custom grading &amp; tech-pack matching on OEM orders.

**OEM / ODM** · Custom  
**Branding**Logo: **Embroidery / Screen / Heat-transfer / Laser**MOQ **30 pcs****1-pc** samplingLead time **4 wks** **DDP** shipping

## Stand-Collar Softshell

## FABRIC

100% polyester · 4-way stretch fleece-bonded

## SIZE

S-3XL · custom grading

Stand collar

Windproof

Water-repellent

Abrasion-resistant



Available Colors — 5 shown of 6 colorways



Navy



Army Green



Black



Royal Blue



Red

Detail Showcase



Size Chart (cm)

Size	Chest	Length	Shoulder	Sleeve
S	110	66	47	58
M	114	68	48	59.5
L	118	70	49	61
XL	122	72	50	62.5
2XL	126	74	51	64
3XL	130	76	52	65.5

Representative measurements; tolerance ±1-3cm. Custom grading & tech-pack matching on OEM orders.

OEM / ODM · Custom  
Branding

Logo: Embroidery / Screen / Heat-transfer / Laser

MOQ 30 pcs

1-pc sampling

Lead time 4 wks

DDP shipping

**Stand-Collar Softshell**

FABRIC

100D polyester · 4-way stretch fleece-bonded

SIZE

S-3XL · custom grading

Stand collar

Windproof

Breathable

Water-repellent

**Available Colors** — 4 shown of 4 colorways

Army Green



Navy



Black



Charcoal Grey

**Detail Showcase****Size Chart** (cm)

Size	Chest	Length	Shoulder+ Sleeve	Hem
S	104	69	70	104
M	108	71	72	108
L	112	73	74	112
XL	116	75	76	116
2XL	120	77	78	120
3XL	124	79	80	124

Representative measurements; tolerance ±1-3cm. Custom grading &amp; tech-pack matching on OEM orders.

**OEM / ODM · Custom  
Branding**Logo: **Embroidery / Screen / Heat-transfer / Laser**MOQ **30 pcs****1-pc** samplingLead time **4 wks** **DDP** shipping

## Single-Layer Couple Jacket

FABRIC 100% polyester

SIZE XS-4XL · custom grading

Hooded

Velcro cuffs

Mesh lining

Windproof



## Available Colors — 5 shown of 5 colorways



Navy



Charcoal Grey



Khaki



Red



Black

## Detail Showcase



## Size Chart (cm)

Size	Chest	Length	Shoulder	Sleeve
XS	106	66	43	59
S	110	68	44.5	60.5
M	114	70	46	62
L	118	72	47.5	63.5
XL	122	74	49	65
2XL	126	76	50.5	66.5
3XL	130	78	52	68
4XL	134	80	53.5	69.5

Representative measurements; tolerance ±1-3cm. Custom grading &amp; tech-pack matching on OEM orders.

OEM / ODM • Custom  
Branding

Logo: Embroidery / Screen / Heat-transfer / Laser

MOQ 30 pcs

1-pc sampling

Lead time 4 wks DDP shipping

## Outdoor Softshell Vest



## FABRIC

100% polyester · 4-way stretch fleece-bonded · ≈280gsm

## SIZE

S-3XL · custom grading

Windproof

Water-repellent

Adjustable hem

Zip pockets

## Available Colors — 4 shown of 4 colorways



Red



Black



Army Green



Blue

## Detail Showcase



## Size Chart (cm)

Size	Chest	Length	Shoulder	Waist
S	100	67	40	100
M	104	69	42	104
L	108	71	44	108
XL	112	73	46	112
2XL	116	75	48	116
3XL	120	77	50	120

Representative measurements; tolerance ±1-3cm. Custom grading &amp; tech-pack matching on OEM orders.

OEM / ODM · Custom  
Branding

Logo: Embroidery / Screen / Heat-transfer / Laser

MOQ 30 pcs

1-pc sampling

Lead time 4 wks

DDP shipping

## Outdoor Vest

FABRIC

100% polyester · breathable mercerised lining

SIZE

S-3XL · custom grading

Stand collar

Articulated back yoke

Windproof



## Available Colors — 4 shown of 4 colorways



Navy



Royal Blue



Black



Red

## Detail Showcase



## Size Chart (cm)

Size	Chest	Length	Shoulder	Waist
S	104	65	40	98
M	108	67	42	102
L	112	69	44	106
XL	116	71	46	110
2XL	120	73	48	114
3XL	124	75	50	118

Representative measurements; tolerance ±1-3cm. Custom grading &amp; tech-pack matching on OEM orders.

OEM / ODM · Custom  
Branding

Logo: Embroidery / Screen / Heat-transfer / Laser

MOQ 30 pcs

1-pc sampling

Lead time 4 wks

DDP shipping

**Outdoor Vest**

FABRIC 100% polyester · mesh lining

SIZE S-3XL · custom grading

Detachable hood

Windproof

Water-repellent

Zip pockets


**Available Colors** — 5 shown of 5 colorways


Red



Royal Blue



Black



Grey



Army Green

**Detail Showcase**

**Size Chart** (cm)

Size	Chest	Length	Shoulder	Waist
S	106	67	46	106
M	110	69	46.5	110
L	114	71	47	114
XL	118	73	47.5	118
2XL	122	75	48	122
3XL	126	77	48.5	126

Representative measurements; tolerance ±1-3cm. Custom grading & tech-pack matching on OEM orders.

**OEM / ODM · Custom  
Branding**

 Logo: **Embroidery / Screen / Heat-transfer / Laser**

 MOQ **30 pcs**

1-pc sampling

 Lead time **4 wks**

DDP shipping

## Men's Fleece Jacket

## FABRIC

100% polyester · double-brushed polar fleece ≈300gsm

## SIZE

Men's S-3XL · custom grading

Zip pockets

Elastic cuffs

Articulated cut

Thermal



Available Colors — 1 shown of 10 colorways



Royal Blue

Detail Showcase



Size Chart (cm)

Size	Chest	Length	Waist	Sleeve
S	106	65	100	59
M	110	67	104	61
L	114	69	106	63
XL	118	71	110	65
2XL	120	73	112	67
3XL	124	75	116	69

Representative measurements; tolerance ±1-3cm. Custom grading & tech-pack matching on OEM orders.

OEM / ODM · Custom  
Branding

Logo: Embroidery / Screen / Heat-transfer / Laser

MOQ 30 pcs

1-pc sampling

Lead time 4 wks DDP shipping

**Single-Layer Hardshell**

**FABRIC** 100% nylon · T800 3-layer laminate

**SIZE** S-2XL · custom grading

3-layer laminate

Tactical sleeve pockets

Stand collar

**Available Colors** — 5 shown of 5 colorways



Black



Wolf Grey



Camo



Croc Yellow



Army Green

**Detail Showcase**



**Size Chart** (cm)

Size	Chest	Length	Shoulder	Sleeve
<b>S</b>	120	68	50	60
<b>M</b>	124	70	51	61
<b>L</b>	128	72	52	62
<b>XL</b>	132	74	53	63
<b>2XL</b>	136	76	54	64

Representative measurements; tolerance ±1-3cm. Custom grading & tech-pack matching on OEM orders.

**OEM / ODM** · Custom  
**Branding**

Logo: **Embroidery / Screen / Heat-transfer / Laser**

MOQ **30 pcs**

**1-pc** sampling

Lead time **4 wks** **DDP** shipping

## Single-Layer Hardshell (LT)



## FABRIC

100% polyester · pongee Tricot laminate

## SIZE

Unisex S-2XL · custom grading

Waterproof zipper

Fully taped seams

Underarm vents

Hood w/ brim

Available Colors — 5 shown of 17 colorways



Red



Rose Pink



Orange



Olive Green



Purple

Detail Showcase



Size Chart (cm)

Size	Chest	Length	Shoulder	Sleeve
S	112	70	/	60
M	116	72	/	61
L	120	74	/	62
XL	124	76	/	63
2XL	128	78	/	64

Representative measurements; tolerance ± 1–3cm. Custom grading & tech-pack matching on OEM orders.

OEM / ODM • Custom  
Branding

Logo: Embroidery / Screen / Heat-transfer / Laser

MOQ 30 pcs

1-pc sampling

Lead time 4 wks DDP shipping

### Single-Layer Hardshell



<b>FABRIC</b>	100% nylon · 70D 3-layer laminate · ≈140gsm
<b>SIZE</b>	Unisex S-XXL · custom grading

- Hooded
- Fully taped seams
- Waterproof-zip pockets
- Underarm vents

**Available Colors** — 5 shown of 10 colorways



Black



Grey



Slate Blue



Magenta Pink



Violet Purple

**Detail Showcase**



**Size Chart** (cm)

Size	Chest	Length	Shoulder	Sleeve
S	112	72	49.8	64.5
M	116	74	51	66
L	120	76	52.2	67.5
XL	124	78	53.4	69
XXL	128	80	54.6	70.5

Representative measurements; tolerance ±1-3cm. Custom grading & tech-pack matching on OEM orders.

**OEM / ODM · Custom Branding**      Logo: **Embroidery / Screen / Heat-transfer / Laser**      MOQ **30 pcs**      **1-pc** sampling  
 Lead time **4 wks**      **DDP** shipping

**Couple Hardshell Pants**

FABRIC 100% polyester · T400 micro-Oxford

LINER ≈160gsm fleece lining

SIZE XXS-3XL · custom grading

Fleece-lined

Thermal


**Available Colors** — 5 shown of 6 colorways


Navy



Black



Pink



White / Grey



Orange Red

**Detail Showcase**

**Size Chart** (cm)

Size	Waist	Length	Hip	CuffWidth
XXS	63	96	92	21.5
XS	66	98	96	22
S	69	100	100	22.5
M	72	102	104	23
L	75	104	108	23.5
XL	78	106	112	24
2XL	81	108	116	24.5
3XL	84	110	120	25

Representative measurements; tolerance ±1-3cm. Custom grading & tech-pack matching on OEM orders.

**OEM / ODM** • Custom  
Branding

Logo: Embroidery / Screen / Heat-transfer / Laser

MOQ 30 pcs

1-pc sampling

Lead time 4 wks DDP shipping



## Couple Hardshell Pants

**FABRIC** 100% polyester · 4-way stretch

**LINER** ≈300gsm lamb-fleece liner

**SIZE** S-3XL · custom grading

Lamb-fleece lined

Thermal

### Available Colors — 3 shown of 3 colorways



Navy



Black



Grey

### Detail Showcase



### Size Chart (cm)

Gender	Size	Waist	Length	Hip	FrontRise/BackRise
Men	S	74-80	97	100	30/40
Men	M	78-84	99	104	31/41
Men	L	82-88	101	108	32/42
Men	XL	86-92	103	112	33/43
Men	2XL	90-96	105	116	34/44
Men	3XL	94-100	107	120	35/45
Women	S	66-72	94	92	28/38
Women	M	70-76	97	96	29/39
Women	L	74-80	99	100	30/40
Women	XL	78-84	101	104	31/41
Women	2XL	82-88	103	108	32/42
Women	3XL	86-92	105	112	33/43



## Couple Softshell Pants

**FABRIC** polyester · 4-way stretch fleece-bonded

**SIZE** S-3XL · custom grading

4-way stretch

Fleece-bonded

Windproof

### Available Colors — 5 shown of 5 colorways



Rose Red



Wine Red



Slate Grey



Black



Navy Blue

### Detail Showcase



### Size Chart (cm)

Gender	Size	Waist	Length	Hip	FrontRise/BackRise
Men	S	74-86	100	98	32/38
Men	M	78-90	102	102	33/39
Men	L	82-94	104	106	34/40
Men	XL	86-98	106	110	35/41
Men	2XL	90-102	108	114	36/42
Men	3XL	94-106	110	118	37/43
Women	S	68-80	95	86	26/32
Women	M	72-84	97	90	27/33
Women	L	76-88	99	94	28/34
Women	XL	80-92	101	98	29/35
Women	2XL	84-96	103	102	30/36
Women	3XL	88-100	105	106	31/37

# How to Order

**1**

## Enquire

Send your models, quantities and branding needs by WhatsApp, WeChat or email.

**2**

## Sample

1-pc sampling with your logo. \$100 fee, refunded on bulk order.

**3**

## Produce

30-pc MOQ. 4-week lead time, rush capacity available.

**4**

## Ship

DDP worldwide, dropship-ready. QC report with every order.

## Why ptoutwear

Low MOQ	<b>from 30 pcs</b>
Full custom branding	<b>4 logo methods</b>
Dropship & DDP	<b>yes</b>
School / team / corporate	<b>one-stop</b>

## Markets served

North America · Europe · Australia · Japan. English-speaking trade team in Yiwu for fast quotes and order tracking.

**Request a Quote or Sample**

**WhatsApp / WeChat +86 158 5790 2741**

ptoutwear.com · OEM / ODM Outdoor Jacket Manufacturer

# PTOUTWEAR

PT OUTDOOR PRODUCTS FACTORY · EST. 2013

## Let's build **your** jacket line.

Low-MOQ OEM / ODM outdoor jackets — hardshell, softshell, 3-in-1, down, fleece. Full custom branding, 1-pc sampling, 30-pc MOQ, DDP worldwide. Send your models and we'll quote within 24 hours.

---

WHATSAPP / WECHAT

**+86 158 5790 2741**

WEBSITE

**ptoutwear.com**

TRADE OFFICE

**Yiwu, Zhejiang, China**

ISO 9001 · SGS Tested · PFC-Free DWR · Dropshipper / Corporate / School teamwear · © 2025 ptoutwear